

Sample Name: **GM.Y.WW.D9.TB20-IB14**  
 Tested for: **Lazarus Naturals-Oregon**  
**Quality Control Testing**

Laboratory ID: 26B0169-05

Matrix: Products

Sample Metrc ID: N/A

Lot # IB14

Batch RFID: N/A

Batch Size: N/A

Harvest Date: N/A

License: NA

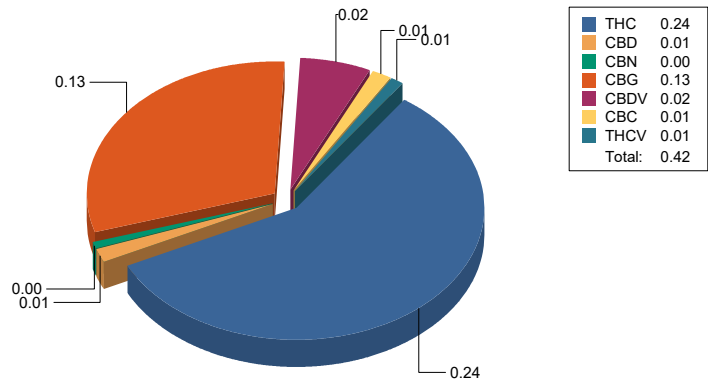
Date Sampled: 02/25/26 00:00

Date Accepted: 02/25/26



### Result Summary

ANALYSIS	VALUE	PASS/FAIL
Total Cannabinoids	0.4182 %	
Total CBD	0.0065 %	
Total THC	0.2428 %	



  
 Breeanna Hamilton  
 Lab Director

Informational testing only, not for OLCC/OMMP/ODA compliance. These results relate only to the sample included on this report. The report may not be reproduced except in full, without the written permission of SC Laboratories. Samples tested in accordance with Oregon Administrative Rules, TNI 2016 Standard and SC Laboratories quality assurance plan unless otherwise noted.

Sample Name: **GMV.WW.D9.TB20-IB14**  
 Tested for: **Lazarus Naturals-Oregon**  
**Quality Control Testing**

Laboratory ID: 26B0169-05

Matrix: Products

Sample Metrc ID: N/A

Lot # IB14

Batch RFID: N/A

Batch Size: N/A

Harvest Date: N/A

License: NA

Date Sampled: 02/25/26 00:00

Date Accepted: 02/25/26



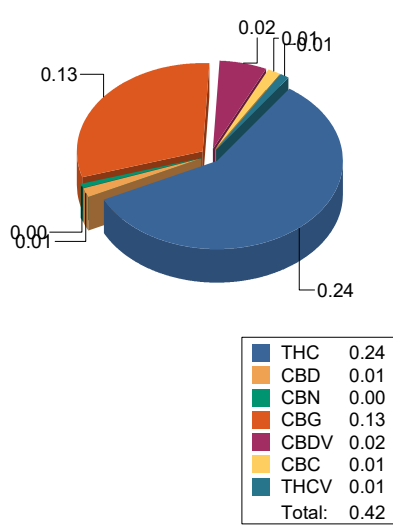
## Potency Analysis

Date Extracted: 02/26/26

Analysis Method: UNODC 5.4.8

Date Analyzed: 02/27/26

\* - ORELAP certified analyte

Cannabinoids	% weight	mg/g	LOQ (%)	Cannabinoids Profile
<b>Total CBD ((CBDA*0.877)+CBD)</b>	0.0065	0.065	0.0006	
<b>Total THC ((THCA*0.877)+d9)</b>	0.2428	2.428	0.0006	
d9-THC (d9-Tetrahydrocannabinol)*	0.2428	2.428	0.0006	
d8-THC (d8-Tetrahydrocannabinol)*	< LOQ	< LOQ	0.0006	
THCA (d9-Tetrahydrocannabinolic Acid)*	< LOQ	< LOQ	0.0006	
CBD (Cannabidiol)*	0.0065	0.065	0.0006	
CBDA (Cannabidiolic Acid)*	< LOQ	< LOQ	0.0006	
CBN (Cannabinol)	0.0035	0.035	0.0006	
CBG (Cannabigerol)	0.1287	1.287	0.0006	
CBGA (Cannabigerolic Acid)	< LOQ	< LOQ	0.0006	
CBDV (Cannabidivarin)	0.0245	0.245	0.0006	
CBDVA (Cannabidivarinic Acid)	< LOQ	< LOQ	0.0006	
CBC (Cannabichromene)	0.0070	0.07	0.0012	
CBCA (Cannabichromenic Acid)	< LOQ	< LOQ	0.0090	
THCV (Tetrahydrocannabivarin)	0.0051	0.051	0.0006	
THCVA (Tetrahydrocannabivarinic Acid)	< LOQ	< LOQ	0.0090	
<b>Total Cannabinoids</b>	<b>0.4182</b>	<b>4.182</b>	<b>0.0006</b>	

<LOQ - Results below the Limit of Quantitation

  
 Breeanna Hamilton  
 Lab Director

Informational testing only, not for OLCC/OMMP/ODA compliance. These results relate only to the sample included on this report. The report may not be reproduced except in full, without the written permission of SC Laboratories. Samples tested in accordance with Oregon Administrative Rules, TNI 2016 Standard and SC Laboratories quality assurance plan unless otherwise noted.

### Case Narrative

**Potency** - THCV exceeded normally accepted RPD criteria in the Sample Duplicate due to high variations in low values.

## Quality Control Potency

### Batch: B260698 - Potency/Terpenes

Blank(B260698-BLK1)			Extracted - 02/26/26 14:55 Analyzed - 02/27/26 15:41					
Analyte	Result	Units	Spike Level	Source Result	%REC	%REC Limits	RPD	RPD Limit
d9-THC (d9-Tetrahydrocannabinol)	< LOQ	%						
d8-THC (d8-Tetrahydrocannabinol)	< LOQ	%						
THCA (d9-Tetrahydrocannabinolic Acid)	< LOQ	%						
CBD (Cannabidiol)	< LOQ	%						
CBDA (Cannabidiolic Acid)	< LOQ	%						
CBN (Cannabinol)	< LOQ	%						
CBG (Cannabigerol)	< LOQ	%						
CBGA (Cannabigerolic Acid)	< LOQ	%						
CBDV (Cannabidivarin)	< LOQ	%						
CBDVA (Cannabidivarinic Acid)	< LOQ	%						
CBC (Cannabichromene)	< LOQ	%						
CBCA (Cannabichromenic Acid)	< LOQ	%						
THCV (Tetrahydrocannabivarin)	< LOQ	%						
THCVA (Tetrahydrocannabivarinic Acid)	< LOQ	%						

Duplicate(B260698-DUP1)			Extracted - 02/26/26 14:55 Analyzed - 02/27/26 15:50					
Analyte	Result	Units	Spike Level	Source Result	%REC	%REC Limits	RPD	RPD Limit
d9-THC (d9-Tetrahydrocannabinol)	0.261	%		0.257			1.32	20
d8-THC (d8-Tetrahydrocannabinol)	< LOQ	%		< LOQ				20
THCA (d9-Tetrahydrocannabinolic Acid)	0.0009	%		0.0008			0.925	20
CBD (Cannabidiol)	0.004	%		0.003			18.8	20
CBDA (Cannabidiolic Acid)	0.024	%		0.024			1.97	20
CBN (Cannabinol)	0.002	%		0.002			4.67	20
CBG (Cannabigerol)	0.027	%		0.026			3.84	20
CBGA (Cannabigerolic Acid)	0.0003	%		0.0003			2.98	20
CBDV (Cannabidivarin)	0.0002	%		< LOQ				20
CBDVA (Cannabidivarinic Acid)	0.0002	%		0.0002			0.968	20
CBC (Cannabichromene)	0.001	%		0.001			1.84	20
CBCA (Cannabichromenic Acid)	< LOQ	%		< LOQ				20
THCV (Tetrahydrocannabivarin)	0.003	%		0.002			25.5	20

  
 Breeanna Hamilton  
 Lab Director

Informational testing only, not for OLCC/OMMP/ODA compliance. These results relate only to the sample included on this report. The report may not be reproduced except in full, without the written permission of SC Laboratories. Samples tested in accordance with Oregon Administrative Rules, TNI 2016 Standard and SC Laboratories quality assurance plan unless otherwise noted.

## Quality Control Potency (Continued)

**Batch: B260698 - Potency/Terpenes (Continued)**

Duplicate(B260698-DUP1)		Extracted - 02/26/26 14:55 Analyzed - 02/27/26 15:50						
Analyte	Result	Units	Spike Level	Source Result	%REC	%REC Limits	RPD	RPD Limit
THCVA (Tetrahydrocannabivarinic Acid)	< LOQ	%		< LOQ				20

LCS(B260698-BS1)		Extracted - 02/26/26 14:55 Analyzed - 02/27/26 15:32						
Analyte	Result	Units	Spike Level	Source Result	%REC	%REC Limits	RPD	RPD Limit
d9-THC (d9-Tetrahydrocannabinol)	0.024	%	0.0249		98.5	90-110		
d8-THC (d8-Tetrahydrocannabinol)	0.027	%	0.0277		97.3	90-110		
THCA (d9-Tetrahydrocannabinolic Acid)	0.024	%	0.0261		93.3	90-110		
CBD (Cannabidiol)	0.030	%	0.0311		96.0	90-110		
CBDA (Cannabidiolic Acid)	0.031	%	0.0327		95.1	90-110		
CBN (Cannabinol)	0.0007	%				80-120		
CBG (Cannabigerol)	0.001	%				80-120		
CBGA (Cannabigerolic Acid)	0.0006	%				80-120		
CBDV (Cannabidivarin)	0.0006	%				80-120		
CBDVA (Cannabidivarinic Acid)	0.0003	%				80-120		
CBC (Cannabichromene)	< LOQ	%				80-120		
CBCA (Cannabichromenic Acid)	< LOQ	%				80-120		
THCV (Tetrahydrocannabivarin)	< LOQ	%				80-120		
THCVA (Tetrahydrocannabivarinic Acid)	< LOQ	%				80-120		

  
 Breeanna Hamilton  
 Lab Director

Informational testing only, not for OLCC/OMMP/ODA compliance. These results relate only to the sample included on this report. The report may not be reproduced except in full, without the written permission of SC Laboratories. Samples tested in accordance with Oregon Administrative Rules, TNI 2016 Standard and SC Laboratories quality assurance plan unless otherwise noted.

