

**Sample Name:** GMY.WW.D9.SC20-IB12  
**Tested for:** *Lazarus Naturals-Oregon*  
**Quality Control Testing**

**Laboratory ID:** 26B0169-04

**Matrix:** Products

**Sample Metrc ID:** N/A

**Lot #** IB12

**Batch RFID:** N/A

**Batch Size:** N/A

**Harvest Date:** N/A

**License:** NA

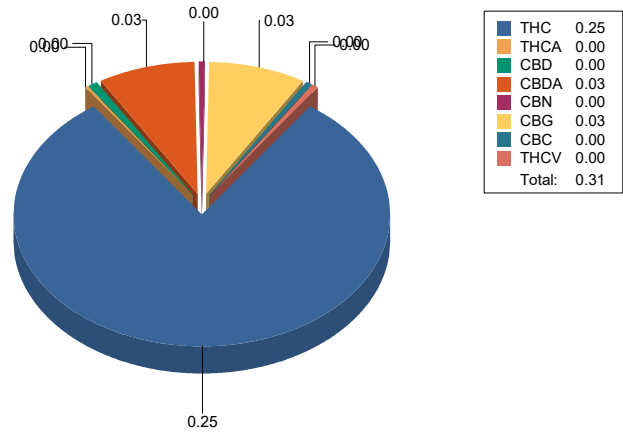
**Date Sampled:** 02/25/26 00:00

**Date Accepted:** 02/25/26



### Result Summary

ANALYSIS	VALUE	PASS/FAIL
Total Cannabinoids	0.3148 %	
Total CBD	0.0262 %	
Total THC	0.2520 %	



  
 Breeanna Hamilton  
 Lab Director

Informational testing only, not for OLCC/OMMP/ODA compliance. These results relate only to the sample included on this report. The report may not be reproduced except in full, without the written permission of SC Laboratories. Samples tested in accordance with Oregon Administrative Rules, TNI 2016 Standard and SC Laboratories quality assurance plan unless otherwise noted.

Sample Name: **GMV.WW.D9.SC20-IB12**  
 Tested for: **Lazarus Naturals-Oregon**  
**Quality Control Testing**

Laboratory ID: 26B0169-04

Matrix: Products

Sample Metrc ID: N/A

Lot # IB12

Batch RFID: N/A

Batch Size: N/A

Harvest Date: N/A

License: NA

Date Sampled: 02/25/26 00:00

Date Accepted: 02/25/26



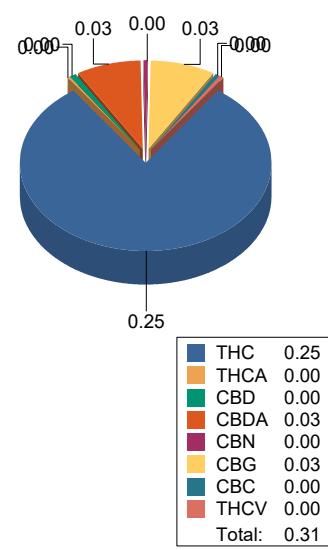
### Potency Analysis

Date Extracted: 02/26/26

Analysis Method: UNODC 5.4.8

Date Analyzed: 02/27/26

\* - ORELAP certified analyte

Cannabinoids	% weight	mg/g	LOQ (%)	Cannabinoids Profile
<b>Total CBD ((CBDA*0.877)+CBD)</b>	0.0262	0.262	0.0004	
<b>Total THC ((THCA*0.877)+d9)</b>	0.2520	2.52	0.0004	
d9-THC (d9-Tetrahydrocannabinol)*	0.2514	2.514	0.0004	
d8-THC (d8-Tetrahydrocannabinol)*	< LOQ	< LOQ	0.0004	
THCA (d9-Tetrahydrocannabinolic Acid)*	0.0007	0.007	0.0004	
CBD (Cannabidiol)*	0.0029	0.029	0.0004	
CBDA (Cannabidiolic Acid)*	0.0265	0.265	0.0004	
CBN (Cannabinol)	0.0017	0.017	0.0004	
CBG (Cannabigerol)	0.0260	0.26	0.0004	
CBGA (Cannabigerolic Acid)	< LOQ	< LOQ	0.0004	
CBDV (Cannabidivarin)	< LOQ	< LOQ	0.0004	
CBDVA (Cannabidivarinic Acid)	< LOQ	< LOQ	0.0004	
CBC (Cannabichromene)	0.0010	0.01	0.0008	
CBCA (Cannabichromenic Acid)	< LOQ	< LOQ	0.0063	
THCV (Tetrahydrocannabivarin)	0.0021	0.021	0.0004	
THCVA (Tetrahydrocannabivarinic Acid)	< LOQ	< LOQ	0.0063	
<b>Total Cannabinoids</b>	<b>0.3148</b>	<b>3.148</b>	<b>0.0004</b>	

<LOQ - Results below the Limit of Quantitation

  
 Breeanna Hamilton  
 Lab Director

Informational testing only, not for OLCC/OMMP/ODA compliance. These results relate only to the sample included on this report. The report may not be reproduced except in full, without the written permission of SC Laboratories. Samples tested in accordance with Oregon Administrative Rules, TNI 2016 Standard and SC Laboratories quality assurance plan unless otherwise noted.

### Case Narrative

**Potency** - THCV exceeded normally accepted RPD criteria in the Sample Duplicate due to high variations in low values.

## Quality Control Potency

### Batch: B260698 - Potency/Terpenes

Blank(B260698-BLK1)			Extracted - 02/26/26 14:55 Analyzed - 02/27/26 15:41					
Analyte	Result	Units	Spike Level	Source Result	%REC	%REC Limits	RPD	RPD Limit
d9-THC (d9-Tetrahydrocannabinol)	< LOQ	%						
d8-THC (d8-Tetrahydrocannabinol)	< LOQ	%						
THCA (d9-Tetrahydrocannabinolic Acid)	< LOQ	%						
CBD (Cannabidiol)	< LOQ	%						
CBDA (Cannabidiolic Acid)	< LOQ	%						
CBN (Cannabinol)	< LOQ	%						
CBG (Cannabigerol)	< LOQ	%						
CBGA (Cannabigerolic Acid)	< LOQ	%						
CBDV (Cannabidivarin)	< LOQ	%						
CBDVA (Cannabidivarinic Acid)	< LOQ	%						
CBC (Cannabichromene)	< LOQ	%						
CBCA (Cannabichromenic Acid)	< LOQ	%						
THCV (Tetrahydrocannabivarin)	< LOQ	%						
THCVA (Tetrahydrocannabivarinic Acid)	< LOQ	%						

Duplicate(B260698-DUP1)			Extracted - 02/26/26 14:55 Analyzed - 02/27/26 15:50					
Analyte	Result	Units	Spike Level	Source Result	%REC	%REC Limits	RPD	RPD Limit
d9-THC (d9-Tetrahydrocannabinol)	0.261	%		0.257			1.32	20
d8-THC (d8-Tetrahydrocannabinol)	< LOQ	%		< LOQ				20
THCA (d9-Tetrahydrocannabinolic Acid)	0.0009	%		0.0008			0.925	20
CBD (Cannabidiol)	0.004	%		0.003			18.8	20
CBDA (Cannabidiolic Acid)	0.024	%		0.024			1.97	20
CBN (Cannabinol)	0.002	%		0.002			4.67	20
CBG (Cannabigerol)	0.027	%		0.026			3.84	20
CBGA (Cannabigerolic Acid)	0.0003	%		0.0003			2.98	20
CBDV (Cannabidivarin)	0.0002	%		< LOQ				20
CBDVA (Cannabidivarinic Acid)	0.0002	%		0.0002			0.968	20
CBC (Cannabichromene)	0.001	%		0.001			1.84	20
CBCA (Cannabichromenic Acid)	< LOQ	%		< LOQ				20
THCV (Tetrahydrocannabivarin)	0.003	%		0.002			25.5	20

  
 Breeanna Hamilton  
 Lab Director

Informational testing only, not for OLCC/OMMP/ODA compliance. These results relate only to the sample included on this report. The report may not be reproduced except in full, without the written permission of SC Laboratories. Samples tested in accordance with Oregon Administrative Rules, TNI 2016 Standard and SC Laboratories quality assurance plan unless otherwise noted.

## Quality Control Potency (Continued)

**Batch: B260698 - Potency/Terpenes (Continued)**

Duplicate(B260698-DUP1)		Extracted - 02/26/26 14:55 Analyzed - 02/27/26 15:50						
Analyte	Result	Units	Spike Level	Source Result	%REC	%REC Limits	RPD	RPD Limit
THCVA (Tetrahydrocannabivarinic Acid)	< LOQ	%		< LOQ				20

LCS(B260698-BS1)		Extracted - 02/26/26 14:55 Analyzed - 02/27/26 15:32						
Analyte	Result	Units	Spike Level	Source Result	%REC	%REC Limits	RPD	RPD Limit
d9-THC (d9-Tetrahydrocannabinol)	0.024	%	0.0249		98.5	90-110		
d8-THC (d8-Tetrahydrocannabinol)	0.027	%	0.0277		97.3	90-110		
THCA (d9-Tetrahydrocannabinolic Acid)	0.024	%	0.0261		93.3	90-110		
CBD (Cannabidiol)	0.030	%	0.0311		96.0	90-110		
CBDA (Cannabidiolic Acid)	0.031	%	0.0327		95.1	90-110		
CBN (Cannabinol)	0.0007	%				80-120		
CBG (Cannabigerol)	0.001	%				80-120		
CBGA (Cannabigerolic Acid)	0.0006	%				80-120		
CBDV (Cannabidivarin)	0.0006	%				80-120		
CBDVA (Cannabidivarinic Acid)	0.0003	%				80-120		
CBC (Cannabichromene)	< LOQ	%				80-120		
CBCA (Cannabichromenic Acid)	< LOQ	%				80-120		
THCV (Tetrahydrocannabivarin)	< LOQ	%				80-120		
THCVA (Tetrahydrocannabivarinic Acid)	< LOQ	%				80-120		

  
 Breeanna Hamilton  
 Lab Director

Informational testing only, not for OLCC/OMMP/ODA compliance. These results relate only to the sample included on this report. The report may not be reproduced except in full, without the written permission of SC Laboratories. Samples tested in accordance with Oregon Administrative Rules, TNI 2016 Standard and SC Laboratories quality assurance plan unless otherwise noted.



1 of 1

26B0169

Scott Forster

2/25/2026

Sample Type Legend

U - Usable Marijuana (Flower)

C - Concentrate or Extract

P - Product

I - Inhalable Cannabinoid Product

O - Other

COC #

Work Order #

Received By

Received Date

Counter

Transfer Manifest #

Date Sampled

Time Sampled

Client

Address

OLCC License #

OLCC License Type

Email

Phone

Name of Sampler

Sampler OLCC License #

**CHAIN OF CUSTODY**

SC Laboratories Oregon LLC  
 15865 SW 74th Avenue, Ste 110  
 Tigard OR, 97224  
 (503) 272-8830  
 ORELAP ID # 4133  
 OLCC License # 010-1018619A26E  
 www.sciabs.com

Lazarus Naturals  
 17711 NE Riverside Pkwy,  
 Portland, OR 97230  
 NA  
 NA  
 bcartwright@lazarusnaturals.com  
 925-315-1933  
 Scott F  
 010-1018619A26E

TESTS REQUESTED										
Pesticide	Residual Solvent	Terpene	Moisture Content	Water Activity	Mycotoxins	Metals	Micros	Sample Type	Total Sample Mass	Potency
								p	40	x
								p	40	x
								p	40	x
								p	40	x
								p	40	x

Sample Name	Time	METRC Label	Harvest or Process Lot	SC Labs LIMS ID	Sample Type	Total Sample Mass	Potency	Residual Solvent	Terpene	Moisture Content	Water Activity	Mycotoxins	Metals	Micros	Sample Specific Notes
GMY.WW.D9.SP20-IB16			IA43	26B0150-01	p	40	x								QC Testing
GMY.WW.D9.BBC20-IB11			IB04	26B0150-02	p	40	x								QC Testing
GMY.WW.D9.WM20-IB15			IA51	26B0150-03	p	40	x								QC Testing
GMY.WW.D9.SC20-IB12			IA02	26B0150-04	p	40	x								QC Testing
GMY.WW.D9.TB20-IB14			IA35	26B0150-05	p	40	x								QC Testing

Notes/Special Considerations:

Sample Name	Time	METRC Label	Harvest or Process Lot	SC Labs LIMS ID	Sample Type	Total Sample Mass	Potency	Residual Solvent	Terpene	Moisture Content	Water Activity	Mycotoxins	Metals	Micros	Sample Specific Notes
GMY.WW.D9.SP20-IB16			IA43	26B0150-01	p	40	x								QC Testing
GMY.WW.D9.BBC20-IB11			IB04	26B0150-02	p	40	x								QC Testing
GMY.WW.D9.WM20-IB15			IA51	26B0150-03	p	40	x								QC Testing
GMY.WW.D9.SC20-IB12			IA02	26B0150-04	p	40	x								QC Testing
GMY.WW.D9.TB20-IB14			IA35	26B0150-05	p	40	x								QC Testing

Notes/Special Considerations:

Sample Name	Time	METRC Label	Harvest or Process Lot	SC Labs LIMS ID	Sample Type	Total Sample Mass	Potency	Residual Solvent	Terpene	Moisture Content	Water Activity	Mycotoxins	Metals	Micros	Sample Specific Notes
GMY.WW.D9.SP20-IB16			IA43	26B0150-01	p	40	x								QC Testing
GMY.WW.D9.BBC20-IB11			IB04	26B0150-02	p	40	x								QC Testing
GMY.WW.D9.WM20-IB15			IA51	26B0150-03	p	40	x								QC Testing
GMY.WW.D9.SC20-IB12			IA02	26B0150-04	p	40	x								QC Testing
GMY.WW.D9.TB20-IB14			IA35	26B0150-05	p	40	x								QC Testing

Sample Name	Time	METRC Label	Harvest or Process Lot	SC Labs LIMS ID	Sample Type	Total Sample Mass	Potency	Residual Solvent	Terpene	Moisture Content	Water Activity	Mycotoxins	Metals	Micros	Sample Specific Notes
GMY.WW.D9.SP20-IB16			IA43	26B0150-01	p	40	x								QC Testing
GMY.WW.D9.BBC20-IB11			IB04	26B0150-02	p	40	x								QC Testing
GMY.WW.D9.WM20-IB15			IA51	26B0150-03	p	40	x								QC Testing
GMY.WW.D9.SC20-IB12			IA02	26B0150-04	p	40	x								QC Testing
GMY.WW.D9.TB20-IB14			IA35	26B0150-05	p	40	x								QC Testing