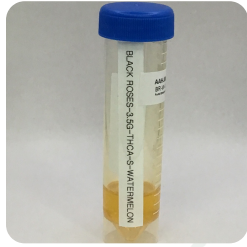




**Certificate of Analysis**  
Compliance Test

**Client Information:**

<b>Fortis Enterprise INC</b> 325 E 9th St Charlotte, NC 28202	Batch # BR-W-1234 Batch Date: 2026-02-04 Extracted From: NA	Test Reg State: Texas
Order # FOR260205-060002 Order Date: 2026-02-05 Sample # AAHJ867	Sampling Date: 2026-02-10 Lab Batch Date: 2026-02-10 Completion Date: 2026-02-16	Initial Gross Weight: 26.700 g Number of Units: 1 Net Weight per Unit: 3500.000 mg



**Potency  
Tested**

Product Image

**Potency 25 (LCUV)**  
Specimen Weight: 506.800 mg

**Tested**  
SOP13.001 (LCUV)

**Potency Summary**

<b>Delta 9 THC</b> None Detected	<b>Total Active CBD</b> None Detected
<b>Total CBG</b> None Detected	<b>Total CBN</b> 0.434% 15.19 mg
<b>Total Cannabinoids</b> 79.782% 2792.37 mg	<b>Total Active THC</b> 28.915% 1012.025 mg
<b>Total THCA-A</b> 32.97% 1153.95 mg	

**Pieces For Panel: 1**

Analyte	Dilution (1:n)	LOD (mg/g)	LOQ (%)	Result (mg/g)	(%)
Delta-8 THC	50.000	2.60E-5	0.015	457.0200	45.7020
THCA-A	50.000	3.20E-5	0.015	329.7000	32.9700
CBN	50.000	1.40E-5	0.015	4.3400	0.4340
Delta-8 THCv	50.000	4.00E-5	0.015	3.1600	0.3160
CBT	50.000	2.00E-4	0.015	1.3200	0.1320
CBCA	50.000	1.07E-4	0.015	1.0500	0.1050
THCVA	50.000	4.70E-5	0.015	1.0300	0.1030
CBL	50.000	3.50E-5	0.015	0.2000	0.0200
CBC	50.000	1.80E-5	0.015	<LOQ	<LOQ
CBD	50.000	5.40E-5	0.015	<LOQ	<LOQ
CBDA	50.000	1.00E-5	0.015	<LOQ	<LOQ
CBDV	50.000	6.50E-5	0.015	<LOQ	<LOQ
CBDVA	50.000	1.40E-5	0.015	<LOQ	<LOQ
CBG	50.000	2.48E-4	0.015	<LOQ	<LOQ
CBGA	50.000	8.00E-5	0.015	<LOQ	<LOQ
CBNA	50.000	9.50E-5	0.015	<LOQ	<LOQ
Delta-8 THC-O Acetate	50.000	2.70E-5	0.025	<LOQ	<LOQ
Delta-9 THC	50.000	1.30E-5	0.015	<LOQ	<LOQ
Delta-9 THC-O Acetate	50.000	7.70E-5	0.1	<LOQ	<LOQ
Delta8-THCP	50.000	3.75E-4	0.015	<LOQ	<LOQ
Delta9-THCP	50.000	1.17E-5	0.012	<LOQ	<LOQ
Exo-THC	50.000	2.30E-4	0.015	<LOQ	<LOQ
THCB	50.000	1.80E-4	0.0163	<LOQ	<LOQ
THCH	50.000	3.50E-4	0.0163	<LOQ	<LOQ
THCV	50.000	7.00E-6	0.015	<LOQ	<LOQ
Total Active CBD	50.000			<LOQ	<LOQ
Total Active THC	50.000			289.1469	45.702

Aixia Sun Lab Director/Principal Scientist  
D.H.Sc., M.Sc., B.Sc., MT (AAB)

**Definitions and Abbreviations used in this report:** Total Active CBD = CBD + (CBD-A \* 0.877), \*Total CBDV = CBDV + (CBDVA \* 0.867), Total Active THC = THCA-A \* 0.877 + Delta 9 THC, Total THCv = THCV + (THCVA \* 0.87), CBG Total = (CBGA \* 0.878) + CBG, CBN Total = (CBNA \* 0.876) + CBN, Total CBC = CBC + (CBCA \* 0.877), Total THC-O-Acetate = Delta 8 THC-O-Acetate + Delta 9 THC-O-Acetate, Total THCP = Delta8-THCP + Delta9-THCP, Total Cannabinoids = Total percentage of cannabinoids within the sample, (mg/ml) = Milligrams per Milliliter, LOQ = Limit of Quantitation, LOD = Limit of Detection, Dilution = Dilution Factor, (ppb) = Parts per Billion, (%) = Percent, (cfu/g) = Colony Forming Unit per Gram, (µg/g) = Microgram per Gram, (ppm) = Parts per Million, (µg/g), (aw) = Water Activity, (mg/Kg) = Milligram per Kilogram. The results apply to the sample as received.  
This report shall not be reproduced, without written approval, from ACS Laboratory. The results of this report relate only to the material or product analyzed. Test results are confidential unless explicitly waived otherwise. ACS Laboratory is accredited to the ISO/IEC 17025:2017 Standard. The tests and/or calibrations marked with an "\*" are not ISO/IEC 17025:2017 accredited test results.





**Certificate of Analysis**  
Compliance Test

**Client Information:**

<b>Fortis Enterprise INC</b> 325 E 9th St Charlotte, NC 28202	Batch # BR-W-1234 Batch Date: 2026-02-04 Extracted From: NA	Test Reg State: Texas
Order # FOR260205-060002 Order Date: 2026-02-05 Sample # AAHJ867	Sampling Date: 2026-02-10 Lab Batch Date: 2026-02-10 Completion Date: 2026-02-16	Initial Gross Weight: 26.700 g Number of Units: 1 Net Weight per Unit: 3500.000 mg

**Potency 25 (LCUV) at Dry Weight**  
Specimen Weight: 506.800 mg

**Tested**  
SOP13.001 (LCUV)

Pieces For Panel: 1 Dilution Factor: 500.000

Analyte	Dilution (1:n)	LOD (mg/g)	LOQ (%)	Result (mg/g)	(%) Analyte	Dilution (1:n)	LOD (mg/g)	LOQ (%)	Result (mg/g)	(%)
Delta-8 THC	50.000	2.60E-5	0.015	457	45.7 CBGA	50.000	8.00E-5	0.015	<LOQ	<LOQ
THCA-A	50.000	3.20E-5	0.015	330	33.0 CBNA	50.000	9.50E-5	0.015	<LOQ	<LOQ
CBN	50.000	1.40E-5	0.015	4.34	0.434 Delta-8 THC-O Acetate	50.000	2.70E-5	0.025	<LOQ	<LOQ
Delta-8 THCv	50.000	4.00E-5	0.015	3.16	0.316 Delta-9 THC	50.000	1.30E-5	0.015	<LOQ	<LOQ
CBT	50.000	2.00E-4	0.015	1.32	0.132 Delta-9 THC-O Acetate	50.000	7.70E-5	0.1	<LOQ	<LOQ
CBCA	50.000	1.07E-4	0.015	1.05	0.105 Delta-8-THCP	50.000	3.75E-4	0.015	<LOQ	<LOQ
THCVA	50.000	4.70E-5	0.015	1.03	0.103 Delta9-THCP	50.000	1.17E-5	0.012	<LOQ	<LOQ
CBL	50.000	3.50E-5	0.015	0.200	0.0200 Exo-THC	50.000	2.30E-4	0.015	<LOQ	<LOQ
CBC	50.000	1.80E-5	0.015	<LOQ	<LOQ THCB	50.000	1.80E-4	0.0163	<LOQ	<LOQ
CBD	50.000	5.40E-5	0.015	<LOQ	<LOQ THCH	50.000	3.50E-4	0.0163	<LOQ	<LOQ
CBDA	50.000	1.00E-5	0.015	<LOQ	<LOQ THCV	50.000	7.00E-6	0.015	<LOQ	<LOQ
CBDV	50.000	6.50E-5	0.015	<LOQ	<LOQ Total Active CBD	50.000			<LOQ	<LOQ
CBDVA	50.000	1.40E-5	0.015	<LOQ	<LOQ Total Active THC	50.000			289	28.9
CBG	50.000	2.48E-4	0.015	<LOQ	<LOQ					

Aixia Sun Lab Director/Principal Scientist  
D.H.Sc., M.Sc., B.Sc., MT (AAB)

Definitions are found on page 1

This report shall not be reproduced, without written approval, from ACS Laboratory. The results of this report relate only to the material or product analyzed. Test results are confidential unless explicitly waived otherwise. ACS Laboratory is accredited to the ISO/IEC 17025:2017 Standard. The tests and/or calibrations marked with an "\*" are not ISO/IEC 17025:2017 accredited test results.

