



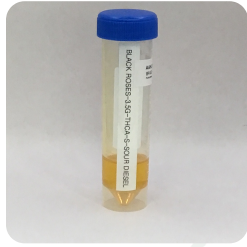
Certificate of Analysis
Compliance Test

Client Information:

Fortis Enterprise INC
325 E 9th St
Charlotte, NC 28202
Order # FOR260205-060002
Order Date: 2026-02-05
Sample # AAHJ866

Batch # BR-SD-1234
Batch Date: 2026-02-04
Extracted From: NA
Test Reg State: Texas

Sampling Date: 2026-02-10
Lab Batch Date: 2026-02-10
Completion Date: 2026-02-16
Initial Gross Weight: 27.100 g
Number of Units: 1
Net Weight per Unit: 3500.000 mg



Product Image

**Potency
Tested**

Potency 25 (LCUV)
Specimen Weight: 505.350 mg

Tested
SOP13.001 (LCUV)

Potency Summary

-	Delta 9 THC None Detected	-	Total Active CBD None Detected
-	Total CBG None Detected	0.433%	Total CBN 15.155 mg
77.778%	Total Cannabinoids 2722.23 mg	28.175%	Total Active THC 986.125 mg
32.127%	Total THCA-A 1124.445 mg		

Pieces For Panel: 1

Analyte	Dilution (1:n)	LOD (mg/g)	LOQ (%)	Result (mg/g)	(%)
Delta-8 THC	50.000	2.60E-5	0.015	445.3100	44.5310
THCA-A	50.000	3.20E-5	0.015	321.2700	32.1270
CBN	50.000	1.40E-5	0.015	4.3300	0.4330
Delta-8 THCV	50.000	4.00E-5	0.015	3.2100	0.3210
CBT	50.000	2.00E-4	0.015	1.3300	0.1330
CBCA	50.000	1.07E-4	0.015	1.0900	0.1090
THCVA	50.000	4.70E-5	0.015	1.0400	0.1040
CBL	50.000	3.50E-5	0.015	0.2000	0.0200
CBC	50.000	1.80E-5	0.015	<LOQ	<LOQ
CBD	50.000	5.40E-5	0.015	<LOQ	<LOQ
CBDA	50.000	1.00E-5	0.015	<LOQ	<LOQ
CBDV	50.000	6.50E-5	0.015	<LOQ	<LOQ
CBDVA	50.000	1.40E-5	0.015	<LOQ	<LOQ
CBG	50.000	2.48E-4	0.015	<LOQ	<LOQ
CBGA	50.000	8.00E-5	0.015	<LOQ	<LOQ
CBNA	50.000	9.50E-5	0.015	<LOQ	<LOQ
Delta-8 THC-O Acetate	50.000	2.70E-5	0.025	<LOQ	<LOQ
Delta-9 THC	50.000	1.30E-5	0.015	<LOQ	<LOQ
Delta-9 THC-O Acetate	50.000	7.70E-5	0.1	<LOQ	<LOQ
Delta8-THCP	50.000	3.75E-4	0.015	<LOQ	<LOQ
Delta9-THCP	50.000	1.17E-5	0.012	<LOQ	<LOQ
Exo-THC	50.000	2.30E-4	0.015	<LOQ	<LOQ
THCB	50.000	1.80E-4	0.0163	<LOQ	<LOQ
THCH	50.000	3.50E-4	0.0163	<LOQ	<LOQ
THCV	50.000	7.00E-6	0.015	<LOQ	<LOQ
Total Active CBD	50.000			<LOQ	<LOQ
Total Active THC	50.000			281.7538	44.531

Aixia Sun Lab Director/Principal Scientist
D.H.Sc., M.Sc., B.Sc., MT (AAB)

Definitions and Abbreviations used in this report: Total Active CBD = CBD + (CBD-A * 0.877), *Total CBDV = CBDV + (CBDVA * 0.867), Total Active THC = THCA-A * 0.877 + Delta 9 THC, Total THCV = THCV + (THCVA * 0.87), CBG Total = (CBGA * 0.878) + CBG, CBN Total = (CBNA * 0.876) + CBN, Total CBC = CBC + (CBCA * 0.877), Total THC-O-Acetate = Delta 8 THC-O-Acetate + Delta 9 THC-O-Acetate, Total THCP = Delta8-THCP + Delta9-THCP, Total Cannabinoids = Total percentage of cannabinoids within the sample, (mg/ml) = Milligrams per Milliliter, LOQ = Limit of Quantitation, LOD = Limit of Detection, Dilution = Dilution Factor, (ppb) = Parts per Billion, (%) = Percent, (cfu/g) = Colony Forming Unit per Gram, (µg/g) = Microgram per Gram, (ppm) = Parts per Million, (µg/g), (aw) = Water Activity, (mg/Kg) = Milligram per Kilogram, The results apply to the sample as received.
This report shall not be reproduced, without written approval, from ACS Laboratory. The results of this report relate only to the material or product analyzed. Test results are confidential unless explicitly waived otherwise. ACS Laboratory is accredited to the ISO/IEC 17025:2017 Standard. The tests and/or calibrations marked with an "*" are not ISO/IEC 17025:2017 accredited test results.





Certificate of Analysis
Compliance Test

Client Information:

Fortis Enterprise INC
325 E 9th St
Charlotte, NC 28202

Batch # BR-SD-1234
Batch Date: 2026-02-04
Extracted From: NA

Test Reg State: Texas

Order # FOR260205-060002
Order Date: 2026-02-05
Sample # AAHJ866

Sampling Date: 2026-02-10
Lab Batch Date: 2026-02-10
Completion Date: 2026-02-16

Initial Gross Weight: 27.100 g

Number of Units: 1
Net Weight per Unit: 3500.000 mg

Potency 25 (LCUV) at Dry Weight
Specimen Weight: 505.350 mg

Tested
SOP13.001 (LCUV)

Pieces For Panel: 1 Dilution Factor: 500.000

Analyte	Dilution (1:n)	LOD (mg/g)	LOQ (%)	Result (mg/g)	(%) Analyte	Dilution (1:n)	LOD (mg/g)	LOQ (%)	Result (mg/g)	(%)
Delta-8 THC	50.000	2.60E-5	0.015	445	44.5 CBGA	50.000	8.00E-5	0.015	<LOQ	<LOQ
THCA-A	50.000	3.20E-5	0.015	321	32.1 CBNA	50.000	9.50E-5	0.015	<LOQ	<LOQ
CBN	50.000	1.40E-5	0.015	4.33	0.433 Delta-8 THC-O Acetate	50.000	2.70E-5	0.025	<LOQ	<LOQ
Delta-8 THCv	50.000	4.00E-5	0.015	3.21	0.321 Delta-9 THC	50.000	1.30E-5	0.015	<LOQ	<LOQ
CBT	50.000	2.00E-4	0.015	1.33	0.133 Delta-9 THC-O Acetate	50.000	7.70E-5	0.1	<LOQ	<LOQ
CBCA	50.000	1.07E-4	0.015	1.09	0.109 Delta-8-THCP	50.000	3.75E-4	0.015	<LOQ	<LOQ
THCVA	50.000	4.70E-5	0.015	1.04	0.104 Delta9-THCP	50.000	1.17E-5	0.012	<LOQ	<LOQ
CBL	50.000	3.50E-5	0.015	0.200	0.0200 Exo-THC	50.000	2.30E-4	0.015	<LOQ	<LOQ
CBC	50.000	1.80E-5	0.015	<LOQ	<LOQ THCB	50.000	1.80E-4	0.0163	<LOQ	<LOQ
CBD	50.000	5.40E-5	0.015	<LOQ	<LOQ THCH	50.000	3.50E-4	0.0163	<LOQ	<LOQ
CBDA	50.000	1.00E-5	0.015	<LOQ	<LOQ THCV	50.000	7.00E-6	0.015	<LOQ	<LOQ
CBDV	50.000	6.50E-5	0.015	<LOQ	<LOQ Total Active CBD	50.000			<LOQ	<LOQ
CBDVA	50.000	1.40E-5	0.015	<LOQ	<LOQ Total Active THC	50.000			282	28.2
CBG	50.000	2.48E-4	0.015	<LOQ	<LOQ					

Aixa Sun Lab Director/Principal Scientist
D.H.Sc., M.Sc., B.Sc., MT (AAB)

Definitions are found on page 1

This report shall not be reproduced, without written approval, from ACS Laboratory. The results of this report relate only to the material or product analyzed. Test results are confidential unless explicitly waived otherwise. ACS Laboratory is accredited to the ISO/IEC 17025:2017 Standard. The tests and/or calibrations marked with an "*" are not ISO/IEC 17025:2017 accredited test results.

