



**Certificate of Analysis**  
Compliance Test

Client Information:

**Fortis Enterprise INC**  
325 E 9th St  
Charlotte, NC 28202

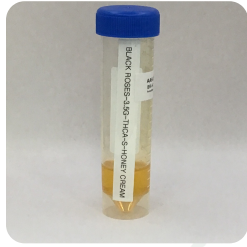
Batch # BR-HC-1234      Test Reg State: Texas  
Batch Date: 2026-02-04  
Extracted From: NA

Order # FOR260205-060002  
Order Date: 2026-02-05  
Sample # AAHJ864

Sampling Date: 2026-02-10  
Lab Batch Date: 2026-02-10  
Completion Date: 2026-02-16

Initial Gross Weight: 26.700 g

Number of Units: 1  
Net Weight per Unit: 3500.000 mg



Product Image

**Potency Tested**

**Potency 25 (LCUV)**  
Specimen Weight: 508.190 mg

**Tested**  
SOP13.001 (LCUV)

**Potency Summary**

<b>Delta 9 THC</b> None Detected	<b>Total Active CBD</b> None Detected
<b>Total CBG</b> None Detected	<b>Total CBN</b> 0.449%      15.715 mg
<b>Total Cannabinoids</b> 80.793%      2827.755 mg	<b>Total Active THC</b> 29.298%      1025.43 mg
<b>Total THCA-A</b> 33.407%      1169.245 mg	

Pieces For Panel: 1

Analyte	Dilution (1:n)	LOD (mg/g)	LOQ (%)	Result (mg/g)	(%)
Delta-8 THC	50.000	2.60E-5	0.015	462.4800	46.2480
THCA-A	50.000	3.20E-5	0.015	334.0700	33.4070
CBN	50.000	1.40E-5	0.015	4.4900	0.4490
Delta-8 THCv	50.000	4.00E-5	0.015	3.2000	0.3200
CBT	50.000	2.00E-4	0.015	1.3300	0.1330
CBCA	50.000	1.07E-4	0.015	1.1000	0.1100
THCVA	50.000	4.70E-5	0.015	1.0600	0.1060
CBL	50.000	3.50E-5	0.015	0.2000	0.0200
CBC	50.000	1.80E-5	0.015	<LOQ	<LOQ
CBD	50.000	5.40E-5	0.015	<LOQ	<LOQ
CBDA	50.000	1.00E-5	0.015	<LOQ	<LOQ
CBDV	50.000	6.50E-5	0.015	<LOQ	<LOQ
CBDVA	50.000	1.40E-5	0.015	<LOQ	<LOQ
CBG	50.000	2.48E-4	0.015	<LOQ	<LOQ
CBGA	50.000	8.00E-5	0.015	<LOQ	<LOQ
CBNA	50.000	9.50E-5	0.015	<LOQ	<LOQ
Delta-8 THC-O Acetate	50.000	2.70E-5	0.025	<LOQ	<LOQ
Delta-9 THC	50.000	1.30E-5	0.015	<LOQ	<LOQ
Delta-9 THC-O Acetate	50.000	7.70E-5	0.1	<LOQ	<LOQ
Delta8-THCP	50.000	3.75E-4	0.015	<LOQ	<LOQ
Delta9-THCP	50.000	1.17E-5	0.012	<LOQ	<LOQ
Exo-THC	50.000	2.30E-4	0.015	<LOQ	<LOQ
THCB	50.000	1.80E-4	0.0163	<LOQ	<LOQ
THCH	50.000	3.50E-4	0.0163	<LOQ	<LOQ
THCV	50.000	7.00E-6	0.015	<LOQ	<LOQ
Total Active CBD	50.000			<LOQ	<LOQ
Total Active THC	50.000			292.9794	46.248

Aixia Sun      Lab Director/Principal Scientist  
D.H.Sc., M.Sc., B.Sc., MT (AAB)

Definitions and Abbreviations used in this report: Total Active CBD = CBD + (CBD-A \* 0.877), \*Total CBDV = CBDV + (CBDVA \* 0.867), Total Active THC = THCA-A \* 0.877 + Delta 9 THC, Total THCV = THCV + (THCVA \* 0.87), CBG Total = (CBGA \* 0.878) + CBG, CBN Total = (CBNA \* 0.876) + CBN, Total CBC = CBC + (CBCA \* 0.877), Total THC-O-Acetate = Delta 8 THC-O-Acetate + Delta 9 THC-O-Acetate, Total THCP = Delta8-THCP + Delta9-THCP, Total Cannabinoids = Total percentage of cannabinoids within the sample, (mg/ml) = Milligrams per Milliliter, LOQ = Limit of Quantitation, LOD = Limit of Detection, Dilution = Dilution Factor, (ppb) = Parts per Billion, (%) = Percent, (cfu/g) = Colony Forming Unit per Gram, (µg/g) = Microgram per Gram, (ppm) = Parts per Million, (µg/g), (aw) = Water Activity, (mg/Kg) = Milligram per Kilogram. The results apply to the sample as received.  
This report shall not be reproduced, without written approval, from ACS Laboratory. The results of this report relate only to the material or product analyzed. Test results are confidential unless explicitly waived otherwise. ACS Laboratory is accredited to the ISO/IEC 17025:2017 Standard. The tests and/or calibrations marked with an "\*" are not ISO/IEC 17025:2017 accredited test results.





**Certificate of Analysis**  
Compliance Test

Client Information:

<b>Fortis Enterprise INC</b> 325 E 9th St Charlotte, NC 28202	Batch # BR-HC-1234 Batch Date: 2026-02-04 Extracted From: NA	Test Reg State: Texas
Order # FOR260205-060002 Order Date: 2026-02-05 Sample # AAHJ864	Sampling Date: 2026-02-10 Lab Batch Date: 2026-02-10 Completion Date: 2026-02-16	Initial Gross Weight: 26.700 g Number of Units: 1 Net Weight per Unit: 3500.000 mg

**Potency 25 (LCUV) at Dry Weight**  
Specimen Weight: 508.190 mg

**Tested**  
SOP13.001 (LCUV)

Pieces For Panel: 1 Dilution Factor: 500.000

Analyte	Dilution (1:n)	LOD (mg/g)	LOQ (%)	Result (mg/g)	(%) Analyte	Dilution (1:n)	LOD (mg/g)	LOQ (%)	Result (mg/g)	(%)
Delta-8 THC	50.000	2.60E-5	0.015	<b>462</b>	46.2 CBGA	50.000	8.00E-5	0.015	<LOQ	<LOQ
THCA-A	50.000	3.20E-5	0.015	<b>334</b>	33.4 CBNA	50.000	9.50E-5	0.015	<LOQ	<LOQ
CBN	50.000	1.40E-5	0.015	<b>4.49</b>	0.449 Delta-8 THC-O Acetate	50.000	2.70E-5	0.025	<LOQ	<LOQ
Delta-8 THCv	50.000	4.00E-5	0.015	<b>3.20</b>	0.320 Delta-9 THC	50.000	1.30E-5	0.015	<LOQ	<LOQ
CBT	50.000	2.00E-4	0.015	<b>1.33</b>	0.133 Delta-9 THC-O Acetate	50.000	7.70E-5	0.1	<LOQ	<LOQ
CBCA	50.000	1.07E-4	0.015	<b>1.10</b>	0.110 Delta-8-THCP	50.000	3.75E-4	0.015	<LOQ	<LOQ
THCVA	50.000	4.70E-5	0.015	<b>1.06</b>	0.106 Delta9-THCP	50.000	1.17E-5	0.012	<LOQ	<LOQ
CBL	50.000	3.50E-5	0.015	<b>0.200</b>	0.0200 Exo-THC	50.000	2.30E-4	0.015	<LOQ	<LOQ
CBC	50.000	1.80E-5	0.015	<LOQ	<LOQ THCB	50.000	1.80E-4	0.0163	<LOQ	<LOQ
CBD	50.000	5.40E-5	0.015	<LOQ	<LOQ THCH	50.000	3.50E-4	0.0163	<LOQ	<LOQ
CBDA	50.000	1.00E-5	0.015	<LOQ	<LOQ THCV	50.000	7.00E-6	0.015	<LOQ	<LOQ
CBDV	50.000	6.50E-5	0.015	<LOQ	<LOQ Total Active CBD	50.000			<LOQ	<LOQ
CBDVA	50.000	1.40E-5	0.015	<LOQ	<LOQ Total Active THC	50.000			<b>293</b>	29.3
CBG	50.000	2.48E-4	0.015	<LOQ	<LOQ					

Aixa Sun Lab Director/Principal Scientist  
D.H.Sc., M.Sc., B.Sc., MT (AAB)

Definitions are found on page 1

This report shall not be reproduced, without written approval, from ACS Laboratory. The results of this report relate only to the material or product analyzed. Test results are confidential unless explicitly waived otherwise. ACS Laboratory is accredited to the ISO/IEC 17025:2017 Standard. The tests and/or calibrations marked with an "\*" are not ISO/IEC 17025:2017 accredited test results.

