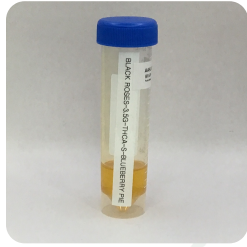




Certificate of Analysis
Compliance Test

Client Information:

Fortis Enterprise INC 325 E 9th St Charlotte, NC 28202	Batch # BR-BP-1234 Batch Date: 2026-02-04 Extracted From: NA	Test Reg State: Texas
Order # FOR260205-060002 Order Date: 2026-02-05 Sample # AAHJ862	Sampling Date: 2026-02-10 Lab Batch Date: 2026-02-10 Completion Date: 2026-02-16	Initial Gross Weight: 26.800 g Number of Units: 1 Net Weight per Unit: 1000.000 mg



Product Image

Potency Tested

Potency 25 (LCUV)
Specimen Weight: 501.130 mg

Tested
SOP13.001 (LCUV)

Potency Summary

Delta 9 THC None Detected	Total Active CBD None Detected
Total CBG None Detected	Total CBN 4.4 mg
Total Cannabinoids 80.048% 800.48 mg	Total Active THC 29.0217% 290.217 mg
Total THCA-A 33.092% 330.92 mg	

Pieces For Panel: 1

Analyte	Dilution (1:n)	LOD (mg/g)	LOQ (%)	Result (mg/g)	(%)
Delta-8 THC	50.000	2.60E-5	0.015	458.1500	45.8150
THCA-A	50.000	3.20E-5	0.015	330.9200	33.0920
CBN	50.000	1.40E-5	0.015	4.4000	0.4400
Delta-8 THCV	50.000	4.00E-5	0.015	3.2500	0.3250
CBT	50.000	2.00E-4	0.015	1.3200	0.1320
CBCA	50.000	1.07E-4	0.015	1.1600	0.1160
THCVA	50.000	4.70E-5	0.015	1.0600	0.1060
CBL	50.000	3.50E-5	0.015	0.2200	0.0220
CBC	50.000	1.80E-5	0.015	<LOQ	<LOQ
CBD	50.000	5.40E-5	0.015	<LOQ	<LOQ
CBDA	50.000	1.00E-5	0.015	<LOQ	<LOQ
CBDV	50.000	6.50E-5	0.015	<LOQ	<LOQ
CBDVA	50.000	1.40E-5	0.015	<LOQ	<LOQ
CBG	50.000	2.48E-4	0.015	<LOQ	<LOQ
CBGA	50.000	8.00E-5	0.015	<LOQ	<LOQ
CBNA	50.000	9.50E-5	0.015	<LOQ	<LOQ
Delta-8 THC-O Acetate	50.000	2.70E-5	0.025	<LOQ	<LOQ
Delta-9 THC	50.000	1.30E-5	0.015	<LOQ	<LOQ
Delta-9 THC-O Acetate	50.000	7.70E-5	0.1	<LOQ	<LOQ
Delta8-THCP	50.000	3.75E-4	0.015	<LOQ	<LOQ
Delta9-THCP	50.000	1.17E-5	0.012	<LOQ	<LOQ
Exo-THC	50.000	2.30E-4	0.015	<LOQ	<LOQ
THCB	50.000	1.80E-4	0.0163	<LOQ	<LOQ
THCH	50.000	3.50E-4	0.0163	<LOQ	<LOQ
THCV	50.000	7.00E-6	0.015	<LOQ	<LOQ
Total Active CBD	50.000			<LOQ	<LOQ
Total Active THC	50.000			290.2168	45.815

Aixia Sun Lab Director/Principal Scientist
D.H.Sc., M.Sc., B.Sc., MT (AAB)

Definitions and Abbreviations used in this report: Total Active CBD = CBD + (CBD-A * 0.877), *Total CBDV = CBDV + (CBDVA * 0.867), Total Active THC = THCA-A * 0.877 + Delta 9 THC, Total THCV = THCV + (THCVA * 0.87), CBG Total = (CBGA * 0.878) + CBG, CBN Total = (CBNA * 0.876) + CBN, Total CBC = CBC + (CBCA * 0.877), Total THC-O-Acetate = Delta 8 THC-O-Acetate + Delta 9 THC-O-Acetate, Total THCP = Delta8-THCP + Delta9-THCP, Total Cannabinoids = Total percentage of cannabinoids within the sample, (mg/ml) = Milligrams per Milliliter, LOQ = Limit of Quantitation, LOD = Limit of Detection, Dilution = Dilution Factor, (ppb) = Parts per Billion, (%) = Percent, (cfu/g) = Colony Forming Unit per Gram, (µg/g) = Microgram per Gram, (ppm) = Parts per Million, (µg/g), (aw) = Water Activity, (mg/Kg) = Milligram per Kilogram. The results apply to the sample as received.
This report shall not be reproduced, without written approval, from ACS Laboratory. The results of this report relate only to the material or product analyzed. Test results are confidential unless explicitly waived otherwise. ACS Laboratory is accredited to the ISO/IEC 17025:2017 Standard. The tests and/or calibrations marked with an "*" are not ISO/IEC 17025:2017 accredited test results.





Certificate of Analysis
Compliance Test

Client Information:

Fortis Enterprise INC
325 E 9th St
Charlotte, NC 28202

Batch # BR-BP-1234
Batch Date: 2026-02-04
Extracted From: NA

Test Reg State: Texas

Order # FOR260205-060002
Order Date: 2026-02-05
Sample # AAHJ862

Sampling Date: 2026-02-10
Lab Batch Date: 2026-02-10
Completion Date: 2026-02-16

Initial Gross Weight: 26.800 g

Number of Units: 1
Net Weight per Unit: 1000.000 mg

Potency 25 (LCUV) at Dry Weight
Specimen Weight: 501.130 mg

Tested
SOP13.001 (LCUV)

Pieces For Panel: 1 Dilution Factor: 500.000

Analyte	Dilution (1:n)	LOD (mg/g)	LOQ (%)	Result (mg/g)	(%) Analyte	Dilution (1:n)	LOD (mg/g)	LOQ (%)	Result (mg/g)	(%)
Delta-8 THC	50.000	2.60E-5	0.015	458	45.8 CBGA	50.000	8.00E-5	0.015	<LOQ	<LOQ
THCA-A	50.000	3.20E-5	0.015	331	33.1 CBNA	50.000	9.50E-5	0.015	<LOQ	<LOQ
CBN	50.000	1.40E-5	0.015	4.40	0.440 Delta-8 THC-O Acetate	50.000	2.70E-5	0.025	<LOQ	<LOQ
Delta-8 THCv	50.000	4.00E-5	0.015	3.25	0.325 Delta-9 THC	50.000	1.30E-5	0.015	<LOQ	<LOQ
CBT	50.000	2.00E-4	0.015	1.32	0.132 Delta-9 THC-O Acetate	50.000	7.70E-5	0.1	<LOQ	<LOQ
CBCA	50.000	1.07E-4	0.015	1.16	0.116 Delta-8-THCP	50.000	3.75E-4	0.015	<LOQ	<LOQ
THCVA	50.000	4.70E-5	0.015	1.06	0.106 Delta9-THCP	50.000	1.17E-5	0.012	<LOQ	<LOQ
CBL	50.000	3.50E-5	0.015	0.220	0.0220 Exo-THC	50.000	2.30E-4	0.015	<LOQ	<LOQ
CBC	50.000	1.80E-5	0.015	<LOQ	<LOQ THCB	50.000	1.80E-4	0.0163	<LOQ	<LOQ
CBD	50.000	5.40E-5	0.015	<LOQ	<LOQ THCH	50.000	3.50E-4	0.0163	<LOQ	<LOQ
CBDA	50.000	1.00E-5	0.015	<LOQ	<LOQ THCV	50.000	7.00E-6	0.015	<LOQ	<LOQ
CBDV	50.000	6.50E-5	0.015	<LOQ	<LOQ Total Active CBD	50.000			<LOQ	<LOQ
CBDVA	50.000	1.40E-5	0.015	<LOQ	<LOQ Total Active THC	50.000			290	29.0
CBG	50.000	2.48E-4	0.015	<LOQ	<LOQ					

Aixa Sun Lab Director/Principal Scientist
D.H.Sc., M.Sc., B.Sc., MT (AAB)

Definitions are found on page 1

This report shall not be reproduced, without written approval, from ACS Laboratory. The results of this report relate only to the material or product analyzed. Test results are confidential unless explicitly waived otherwise. ACS Laboratory is accredited to the ISO/IEC 17025:2017 Standard. The tests and/or calibrations marked with an "*" are not ISO/IEC 17025:2017 accredited test results.

